

ASME B16.34
1/2"-2": ASME Class 150-1500
3"-12": ASME Class 150-900

Nevada Slurry Valve

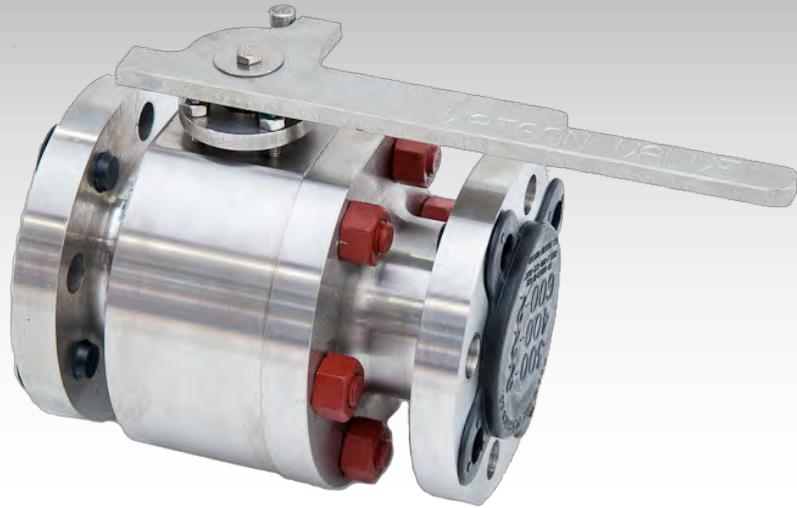
WV Series

OVERVIEW

A severe service metal seated ball valve featuring advanced engineering, precision machining and Watson Grinding's proprietary HVOF & Plasma coatings. Our technology is widely used in mining, chemical, petrochemical and refining industries where critical isolation valve reliability is vital.

FEATURES

- Two piece body design
- Manufactured from forged metals
- Fire safe to API 607 4th Edition
- Floating ball w/ full bore design
- Class IV through Class V sealing (Bi-directional)
- Watson Grinding proprietary coating technology
- Shoulder style actuator mounting brackets



RANGE & DESIGN STANDARDS

Standard Sizes	1/2" - 12"
ANSI Classes	150# - 1500#
Design Criteria	B16.34
Face to face	B16.10 (Specials lengths available)
Standard Testing	Per API 598
End Connections	RF, RTJ, SW, BWE, Special Connections
Available Materials	SS, Duplex, Titanium, Hastelloy
Actuation Options	Manual, Pneumatic, Hydraulic, Electric, Gear Operator



WATSON VALVE SERVICES, INC.

4512 STEFFANI LN.

HOUSTON, TEXAS 77041

Phone: 713-983-8598

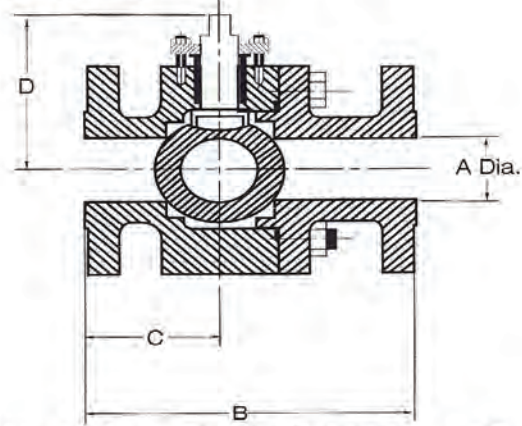
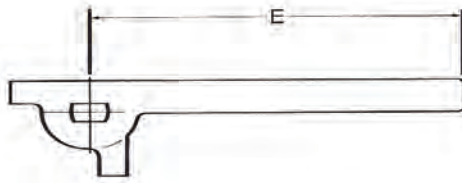
Fax: 713-466-8992

www.watsonvalve.com



DIMENSIONS

Floating, Full Port, Ball Design
with Metal Seats 1/2" - 12"



Model WV 150 RF (ANSI Class 150)

Model WV 300 RF (ANSI Class 300)

Valve Size	Approximate Dimensions (Inches)				
	A	B	C	D	E
1/2	0.5	4.25	2.12	2.37	6
3/4	0.75	4.62	2.31	2.18	6
1	1	5	2.5	3	7
2	2	7	3.37	4.88	10
3	3	8	3.63	7.36	15
4	4	9	4.87	8.7	18
6	6	15.5	6.64	13.2	-
8	8	18	7.87	16.21	-
10	10	21	10.37	21.25	-
12	11.5	24	11.62	23	-

Valve Size	Approximate Dimensions (Inches)				
	A	B	C	D	E
1/2	0.5	5.5	2.29	2.37	6
3/4	0.75	6	2.62	2.18	6
1	1	6.5	2.85	3	7
2	2	8.5	3.46	4.88	10
3	3	11.13	4.95	7.36	15
4	4	12	5.03	8.7	18
6	6	15.87	7.13	13.2	-
8	8	19.75	8.76	16.21	-
10	10	22.38	10.75	21.25	-
12	11.5	25.5	12.32	23	-

Model WV 600 RF (ANSI Class 600)

Model WV 900 RF (ANSI Class 900)

Valve Size	Approximate Dimensions (Inches)				
	A	B	C	D	E
1/2	0.5	6.5	2.12	2.4	8
3/4	0.75	7.5	2.3	2.5	8
1	1	8.5	3	3	10
2	2	11.5	4.7	5	12
3	3	14	5.8	7.4	18
4	4	17	6.8	9.7	-
6	6	22	8.9	13.2	-
8	8	26	10.5	16.1	-
10	10	31	13.5	23.2	-
12	11.5	33	15	25	-

Valve Size	Approximate Dimensions (Inches)				
	A	B	C	D	E
1	1	10	3.3	3.25	10
2	2	14.5	5	5.5	12
3	3	15	6.1	7.6	-
4	4	18	7.5	9.7	-
6	6	24	9.5	12.3	-
8	8	29	12	16.1	-
10	10	33	14	23.2	-
12	11.5	38	16.1	26.7	-

Other Pressure Classes available. Valve design complies with ANSI B 16.34
End to End complies with ANSI B16.10
Standard Pressure Testing per API 598